



www.RetroComputerShack.com

RS232 SERIAL PORT ADAPTER LEAD v1.1

FOR ANY MODEL OF SINCLAIR SPECTRUM OR QL, THAT HAS THE RS232 PORT SINCLAIR SPECTRUM 128K (TOAST RACK), SPECTRUM +2, +3 AND QL

This adapter lead converts the non standard RS232 port (looks like a BT phone connector) on the Sinclair Spectrum & QL computers, into a standard 9 way 'D' type (DB9F) female connector. This makes connection and experimenting with the serial port, much easier. **This lead is intended for sale, only to the more experienced enthusiast. A sound knowledge and understanding of serial communication signals, and terminal emulation programs etc, is required to use this adapter.**

This adapter lead isn't intended to connect directly to peripherals, but just to convert the Spectrum non standard serial port, into a standard 9 pin 'D' Type. **You will still need to supply a serial lead to connect from the adapter to the peripheral.** in most cases this will just require a straight wired, 9 way 'D' type Male to Female lead. The test program below, outputs text from the Spectrum, into Windows HyperTerminal (Terminal emulation software) running on a Windows based PC, with a Serial port.

EXAMPLE USING HYPERTERMINAL TO CAPTURE TEXT FROM A SPECTRUM +3

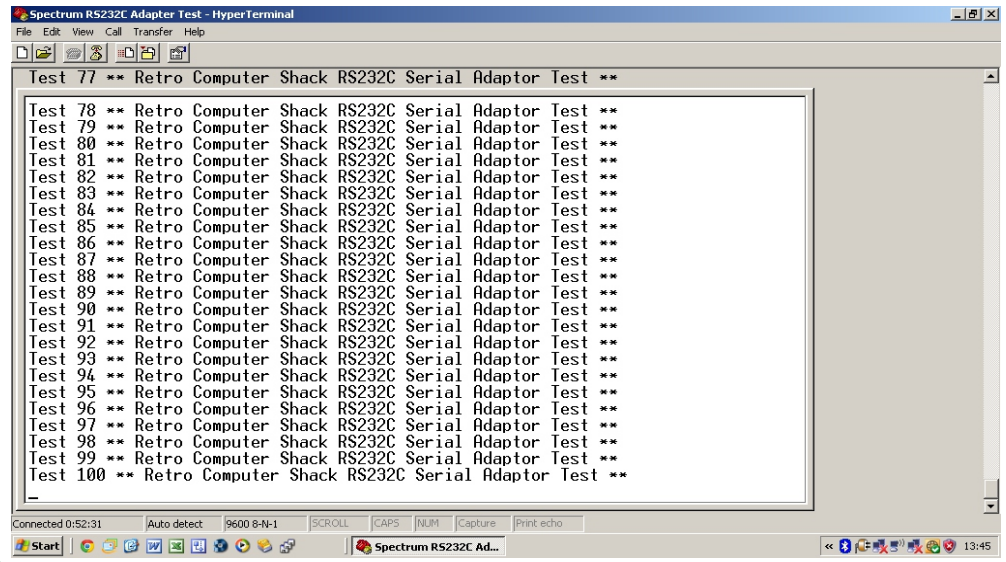
SPECTRUM +3 TEST PROGRAM - WILL NOT WORK ON A SINCLAIR QL

```
10 REM ** RCS RS232 ADAPTER **
20 REM ** Test Program v1.0 **
30 REM ** Written By **
40 REM ** Ian Priddey **
50 CLS
100 FORMAT LPRINT "R"
110 FOR i = 1 TO 100
113 PRINT AT 1,1;"test ";i
115 PRINT AT 2,1;"Sending output to Serial Port"
120 LPRINT "Test ";i; " ** Retro Computer Shack RS232C Serial Adaptor Test **"
130 NEXT i
```

The Spectrum +3 program on the left, will send the text in line 120, 100 times to HyperTerminal on the PC. The output is shown in the HyperTerminal screen shot below.

Typing LLIST will send the program listing, to HyperTerminal.

OUTPUT IN HYPERTERMINAL, RUNNING THE PROGRAM ABOVE ON A SPECTRUM +3 COMPUTER



CABLE USED TO CONNECT TO HYPERTERMINAL



The above serial cable was used to connect the Spectrum Serial Adapter to COM1 serial port on the PC (Male Connector).

NOT SUPPLIED

This lead is a standard 9 pin Serial RS232 Male to Female extension cable, straight wired pin for pin, and can be bought from ebay or electronics shops, very cheaply

HYPERTERMINAL SERIAL PORT SETTINGS

Bits per second: 9600
Data bits: 8
Parity: None
Stop bits: 1
Flow control: None

SERIAL ADAPTER SIGNAL PINOUTS

Sinclair	Wire Colour	D Type
1 (Gnd)	BLUE	5 (Gnd)
2 (Txd)	YELLOW	3 (Txd)
3 (Rxd)	GREEN	2 (Rxd)
4 (Dtr)	RED	4 (Dtr)
5 (Cts)	BLACK	8 (Cts)
6 (+12V)	WHITE	9 Ring Indicator

Not Connected

The +12V (WHITE Wire) is NOT connected at the 'D TYPE', end, but is present, so you can solder it on, if required.

ONLY THIS ADAPTER LEAD IS SUPPLIED



9 Pin 'D Type' female serial connector